

#### 4. A BRIEF HISTORY OF GREAT BOWDEN

Great Bowden is a very old settlement. In Anglo-Saxon times, centuries before Harborough appeared, it was an important Royal Manor, extending far beyond its present boundaries, and until relatively recently much of Market Harborough was included in the parish of Great Bowden.

Part of this ancient heritage can be seen in the fact that we have more greens than most villages - five, in fact: Church Green, Stocks Green (by The Shoulder of Mutton), Nether Green to the north, Middle Green (between Langton Road and the Old Hall), and Upper Green. Middle Green has now been almost eroded away by building and Upper Green has been nibbled at, but the others remain largely intact, except that the large ponds that used to be on The Green (in front of the old Forge) and on Nether Green have been filled in.

What is more surprising is that Great Bowden, unlike Harborough and Little Bowden, has hardly spread beyond its ancient boundaries so that the shapes of the original fields, with their ridge-and-furrow, can still be seen surrounding the village.

#### THE FACE OF GREAT BOWDEN

However, change has occurred, mainly at two particular periods. These have sketched in the present appearance of Great Bowden and given its special character.

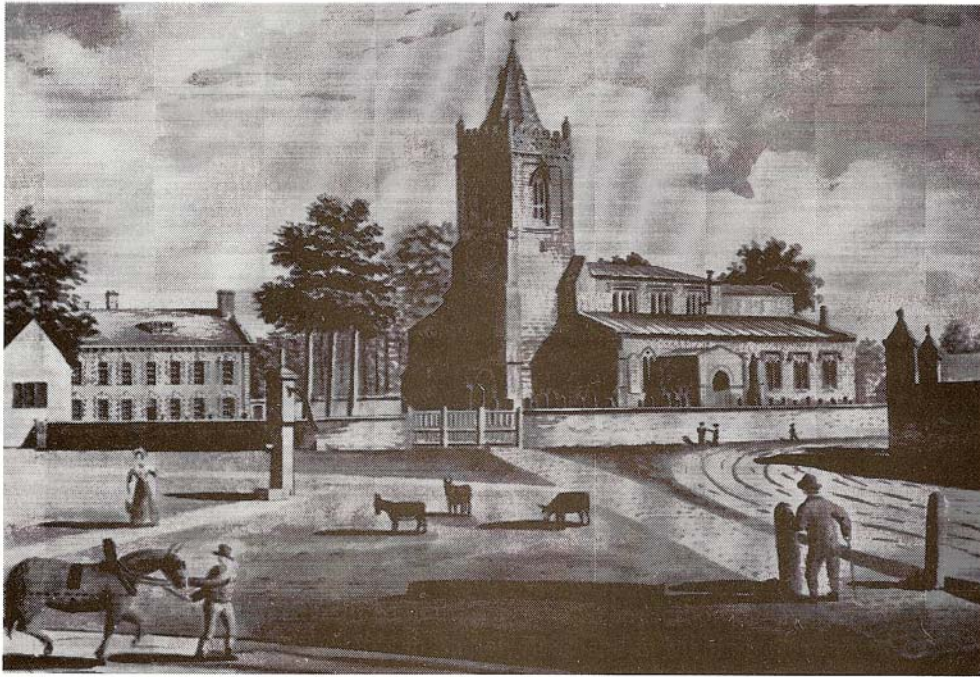
The first was around the turn of the present century, when the Church was extensively restored, the Recreation Ground was established and much rebuilding and tree-planting took place. The man mainly responsible was John Henry Stokes. He came here in 1875, created a renowned business at Nether House as a breeder of fine horses - hunters, show horses, matched carriage pairs & fours, steeplechasers - and knocked down rows of decrepit cottages to make room for a series of large hunting lodges such as Nether Green Lodge, Green Lodge, Bishop's House and Springfield Lodge. He also lent the money to build the Village Hall. At the same time, no doubt wanting an impressive approach to his house and stables, he planted those long lines of lime and horse chestnut trees along Sutton Road and up Nether Green which are now fully mature. Other tree plantings of the time can be seen edging the Rec., in the churchyard, along Dingley Road, and around Upper Green.

All this changed the whole character of the village, adding some architectural dignity but leaving very little physical evidence of the preceding centuries. Before 1700 most houses were of timber and mud, sometimes on a stone foundation, though there is no local stone. After that date, with the emergence of a local brickyard, brick was used, though humble cottages would still be of mud. Even the handful of timber-framed houses, like the Old Forge, had their frames filled in with brick and many had large brick extensions. Stokes's fancy houses simply finished off this process.

The second period of change came after the Second World War, when ribbon building, which had started in the 30's, filled in the space between Harborough and Bowden. The Council houses of the early 1950's in Station Road and in Main Street were part of this development which has gone on, with in-fill building, ever since.

In among the modern buildings there remains a fair number of historic houses, details of which are in the "Walk Round Great Bowden" leaflet. This mixture, together with the Greens and the stands of mature trees, give Great Bowden an unusual attractiveness, which has been recognised several times in recent years by the granting of a Conservation Area status, by awards under the Leicestershire Best-kept Village competition and now by the achievement of its own Parish Council.

A feature of Great Bowden now is the vitality of its community life, as evidenced by the buoyancy of its clubs and societies, its school and church. Perhaps Great Bowden has always been so, but the records are scanty because it has never become famous or notorious enough to attract national attention. So it might be easy to become complacent: if Great Bowden has throughout a millennium enjoyed a quiet and pleasant life, is there anything to worry about? The purpose of this Appraisal is to find out.



*Painting of Great Bowden Church and Rectory circa 1835.*

## 5. A GREAT BOWDEN CHRONOLOGY

	<u>1000AD</u>	Sources in squared brackets
1086	Domesday Book. Great Bowden mentioned as BUGEDONE.	
"	Population 49 . . . . .	[Victoria County History]
	<u>1200</u>	
1220	First mention of Great Bowden Church . . . . .	[Great Bowden Church History by G.K.Brandwood 1979]
"	First mention of St. Mary in Arden Church . . . . .	[Victoria County History]
	<u>1300</u>	
1348-9	Bubonic "Black Death" plague . . . . .	["Oxford Companion to Local & Family History"]
1360-2	Bubonic "Black Death" plague . . . . .	["Oxford Companion to Local & Family History"]
1369	Bubonic "Black Death" plague. Endemic in UK until after 1666 . . . . .	["Oxford Companion to Local & Family History"]
1377	107 Taxpayers . . . . .	[Victoria County History]
	<u>1400</u> <u>1500</u>	
1510	Monastic building recorded on site of Rectory house . . . . .	[Great Bowden: A walk around the Village]
1599	Oldest Bell No. 5 in the Parish Church. Made by Taylors of Loughborough . . . . .	[Bell Tower History: Author unknown]
	<u>1600</u>	
1613	Rites of Baptism/Marriage transferred from St. Mary-in-Arden to St. Dionysius . . . . .	[1888 Kelly Directory]
1614	The Old Bakehouse, Main Street, (approx date) . . . . .	["Great Bowden: A walk around the village"]
1621	Bell No. 4 installed in Parish church . . . . .	["History of Great Bowden" by Rev Farquharson]
1624	Bell No. 3 installed in Parish Church . . . . .	["History of Great Bowden" by Rev Farquharson]
1642 - 1651	The Civil War . . . . .	[Pitkin Guide to the Civil War]
1645	Battle of Naseby - 14th June.	
1670	135 Households in Great Bowden . . . . .	[Hearth Tax Returns: CRO]
1671	Stone House off Main Street built . . . . .	["Great Bowden: A walk around the Village" + Date stone]
1675	Upper Green Farmhouse, (approx date) . . . . .	["Great Bowden: A walk around the Village"]
1697	Window Tax introduced. Abolished 1851 . . . . .	["Oxford Companion to Local & Family History"]
	<u>1700</u>	
1737	Bell No. 1 installed in Parish Church . . . . .	["History of Great Bowden" by Rev Farquharson]
1739	Bell No. 2 installed in Parish Church . . . . .	["History of Great Bowden" by Rev Farquharson]
1773	Stone House off Main Street brick extension built . . . . .	[Date stone]
1776	Great Bowden Parish enclosed . . . . .	[1876 Harborough Directory]
1790	Parish Church: Box pews installed. . . . .	[Church History by G.K.Brandwood]
	<u>1800</u>	
1801	Population: 783 . . . . .	[Victoria County History]
1809	Foxton to Market Harborough canal opened Friday 13th October . . . . .	[Old Union Canals Society]
"	Britannia Inn (at canal): Licensee, Joseph Gilbert . . . . .	[Alehouse Recognizance Register for Bowden Magna. CRO]
"	Bowden Coal Wharf at the canal in operation . . . . .	["The Leicester Line" by Philip A. Stevens]
1811	First of 7 canal boats built by Joseph Gilbert at The Britannia Wharf . . . . .	[Michael C. Brown research]
"	Bowden Brickyard in operation making bricks & tiles . . . . .	[Northamptonshire Mercury newspaper]
"	Population: 826 . . . . .	[Victoria County History]
1821	Population: 961 . . . . .	[Victoria County History]
1831	Population: 1074 . . . . .	[Census]
"	Joseph Gilbert, Brick & Tile Maker, Great Bowden Wharf also at Britannia Inn . . . . .	[Pigot Directory]
1832	Mile of A6 road reconstructed to give easier gradient on Gallow Hill . . . . .	[Victoria County History]
"	Parish Church Sunday School . . . . .	[C. of E. Primary School History 1839-1989]
1839	Village School, Dingley Road opens . . . . .	[1985 Village Festival Programme; article by Mr S. S. East]
1841	Population 1265 . . . . .	[Victoria County History]
"	Severe poverty & distress in Gt. Bowden; 30+ people admitted to Harboro' Workhouse . . . . .	[Leics Mercury 16 Jan 1841]
1849	Inspector William Lee's report on poor sanitary conditions in district . . . . .	["Town Affairs" by J. C. Davies]
"	Average life 45 years 9 months. Death rate 21 per 1000 . . . . .	[Local Board Annals 1880 - 1895]
"	Welham Ballast hole/lake excavated?	
	<u>1850</u>	
1850	Rugby to Stamford railway opened through Great Bowden . . . . .	["Bowden to Harborough" by J. C. Davies]
1851	Population: 1299 . . . . .	[Victoria County History]
1854	Market Harborough Advertiser newspaper started by William Eland . . . . .	["Victorian Harborough" by J. C. Davies]
1857	Leicester to Hitchin railway opened . . . . .	["Book of Market Harborough" by J. C. Davies]
"	William Hay buys Britannia Inn and converts & extends it into Bowden Hall . . . . .	[Michael C. Brown research]
1861	Population: 1395 . . . . .	[Victoria County History]
1866	Fatal accident at Great Bowden railway level crossing, Main Street . . . . .	[Midland Free Press 3 March 1866]
1870	Population: approx 1400 . . . . .	[1870 Harrod Directory]
1871	Population: 1450 . . . . .	[Victoria County History]
1873	Dingley Road School enlarged . . . . .	[Victoria County History]

1875	John Henry Stokes (Born: North Luffenham), moves to Great Bowden . . . . .	[Great Bowden: A walk around the Village]
1878	Death of William Hay of Bowden Hall on 22nd April; aged 66 yrs . . . . .	[Gravestone & Burial Records]
1879	Parish Church graveyard closed in June . . . . .	[Market Harborough Advertiser 21 May 1878]
"	Upper House, off Main Street built with additions in 1911 . . . . .	[Victoria County History]
1880	First Interment in Great Bowden Cemetery, Dingley Road. (January). . . . .	[“Town Affairs” by J. C. Davies]
"	24th Feb. First meeting of Mkt Harboro’, Gt. & Lt. Bowden Local Board . . . . .	[“Town Affairs” by J. C. Davies]
"	Railway enforced to provide safe crossing at Great Bowden . . . . .	[Local Board Annals 1880 - 1895]
"	Earliest known Street Map of the Village . . . . .	[Harborough District Council]
1881	Census: Population -	
"	Great Bowden: 1985. Market Harborough: 2418. Little Bowden: 948 . . . . .	[Local Board Annals 1880 - 1895]
1882	Medical Officers return of death rate; Great Bowden 16 per 1000. MH 25. LB 13 . . . . .	[Local Board Annals 1880 - 1895]
1883	Houses in village 240 . . . . .	[Local Board Annals 1880 - 1895]
1884	Main Street railway bridge constructed . . . . .	[Local Board Annals 1880 - 1895]
"	Local Board inaugurated . . . . .	[“Town Affairs” by J. C. Davies]
"	Leicester Lane houses, known as “Navvies Row” built . . . . .	[Victoria County History]
"	Borrow pit, Langton Road excavated. (now Site of Special Scientific Interest) . . . . .	[Harborough Mail 22 Jul. 1993]
"	Railway diversion at Langton Road; screen to be provided . . . . .	[Local Board Annals 1880 - 1895]
"	Ponds in Great Bowden ordered to be bricked . . . . .	[Local Board Annals 1880 - 1895]
1885	The Congregational Church built in Main Street . . . . .	[Great Bowden: A walk around the Village]
"	Village Streets lighted by 50 oil lamps . . . . .	[Local Board Annals 1880 - 1895]
"	Lamp in centre of railway bridge at Great Bowden removed at request of Midland Railway Co. as their drivers mistook it for a signal . . . . .	[Local Board Annals 1880 - 1895]
"	Flyover, Langton Road opened to take Midland Railway over LNWR . . . . .	[“Historical Survey of Stations” by Dr Hendry]
1886	Congregational Chapel, Main Street opened 19th May . . . . .	[1981 Village Festival Programme]
"	Parish Church box pews cut down & converted to open sittings . . . . .	[Church History by G.K.Brandwood]
"	Ordnance Survey street map of Village . . . . .	[Harborough Museum]
"	Major restoration of Parish Church . . . . .	[“Victorian Harborough” by J. C. Davies]
"	Medieval wall paintings found in Parish Church . . . . .	[Church History by G.K.Brandwood ]
"	Systematic sewerage scheme installed . . . . .	[Victoria County History]
"	Organ relocated in Parish Church. . . . .	[“History of Great Bowden” by Rev. Farquharson]
1887	Parish Church re-opened after major restoration . . . . .	[“History of Great Bowden” by Rev. Farquharson]
1889	Scarlet fever in Great Bowden . . . . .	[Local Board Annals 1880 - 1895]
1890	Piped water supply first supplied in Great Bowden . . . . .	[Victoria County History]
"	Gas company to lay mains into village . . . . .	[Local Board Annals 1880 - 1895]
"	Gas lamps installed in Great Bowden . . . . .	[Victoria County History]
"	Great Bowden Flower Show established . . . . .	[“Victorian Harborough” by J. C. Davies]
"	Ponds in Great Bowden ordered to be cleaned out . . . . .	[Local Board Annals 1880 - 1895]
1891	Census: Population :-	
"	Great Bowden: 2257. Market Harborough: 2131. Little Bowden: 1486 . . . . .	[Local Board Annals 1880 - 1895]
"	East window installed in Parish Church to William Hay of Bowden Hall . . . . .	[Church History by G.K.Brandwood]
"	School closed 24th November for scarlatina infection. . . . .	[Local Board Annals 1880 - 1895]
1892	King Lamp erected on The Green. (Gas) . . . . .	[Local Board Annals 1880 - 1895]
"	William Harrington Hay appointed Parish Church Warden. Remained until 1924 (32 years)[Parish Church memorial]	
1893	Houses in Great Bowden to be numbered . . . . .	[Local Board Annals 1880 - 1895]
1894	Pond in Main Street filled in after 2 years being dry and a nuisance . . . . .	[Local Board Annals 1880 - 1895]
"	Houses in village 234 . . . . .	[Local Board Annals 1880 - 1895]
1895	Population: 2,259. Area: 3,178 acres . . . . .	[1895 Kelly Directory]
"	New clock at Parish Church . . . . .	[“History of Great Bowden” by Rev. Farquharson]
"	Wrought Iron Chancel screen installed in Parish Church . . . . .	[Church History by G.K.Brandwood]
1897	Meeting Hall added to the Congregational Church . . . . .	[Great Bowden: A walk around the Village]
1898	Approx opening of Co-Op Society shop, The Green . . . . .	[“Talking Shop” by Sam Mullins & D. Stockdale]
	<b>1900</b>	
1900	John Henry Stokes builds Bishops House, The Green . . . . .	[Great Bowden: A walk around the Village]
1902	Village Hall, opened to commemorate the Coronation of King Edward VII . . . . .	[Great Bowden: A walk around the Village]
"	Market Harborough UDC acquire Bowden Brickyard as ash & refuse tip. . . . .	[Harborough District Council]
1903	Nether Green Lodge, Sutton Road, built . . . . .	[Date stone on building]
1905	Great Bowden Recreation Ground. (approx 8 acres) . . . . .	[Book of Market Harborough by J. C. Davies]
1906	Green Lodge built on site of the old Congregational Church . . . . .	[Great Bowden: A walk around the Village]
1912	Foot & Mouth disease strikes district . . . . .	[Great Bowden: A walk around the Village]
"	Horticultural Society Athletic Sports Day, Dingley Road . . . . .	[Programme of Events]
1914	Horticultural Society last show for 32 years . . . . .	[“Great Bowden Show” by Prof. H. A. Jones. Harborough Historian 14]
1918	Death of Charles Fernie, founder of the Fernie Hunt . . . . .	[Great Bowden: A walk around the Village]
1920	Death of John Henry Stokes . . . . .	[Great Bowden: A walk around the Village]
1920	First Parish Church Parochial Church Council formed . . . . .	[“History of Great Bowden” by Rev. Farquharson]
1921	War Memorials in Parish Church unveiled 21st June . . . . .	[Mkt. Harb. Advertiser Newspaper Supplement 21 June 1921]

1921	Census. Population: 4323. Acreage: 3292 . . . . .	[Green & Co. Directory 1926]
1923	Hunt Kennels built by Lord Stalbridge of Nether House . . . . .	[Great Bowden: A walk around the Village]
"	Great Bowden Women's Institute. First meeting in village . . . . .	[Leicester Mercury 28 Jun. 1993]
1924	William Harrington Hay completes 32 years as Churchwarden . . . . .	[Michael C. Brown research]
1925	Death of William Harrington Hay of Bowden Hall aged 76 yrs . . . . .	[Michael C. Brown research]
"	Restoration of Parish Church Tower & Bells . . . . .	[“History of Great Bowden” by Rev. Farquharson]
1926	Rectory House auctioned off by Christ Church Oxford. . . . .	[Great Bowden: A walk around the Village]
"	Electric light installed in Parish Church . . . . .	[“History of Great Bowden” by Rev. Farquharson]
1927	Great Bowden & Little Bowden incorporated into Civil Parish of Market Harborough . . . . .	[Victoria County History]
"	Tower screen, Parish Church installed; memorial to William Harrington Hay . . . . .	[Church History by G.K.Brandwood]
1928	Resolution by MHDC November; “that Gunnsbrook be filled in” (Pond Green) . . . . .	[John March records]
1941	Five bombs fell on Great Bowden during World War II . . . . .	[“Market Harborough - As I Remember It” by Jane Barrows]
1945	Rev. E. E. Farquharson publishes History of Great Bowden. . . . .	[Victoria County History]
1948-1950	Council Houses in Main Street built. (9 semi-detached) . . . . .	[Victoria County History]
"	Symington & Thwaites Shop, The Green closes . . . . .	[“Around Mkt. Harborough in old Photos” by S. Mastoris]
1949	Parish Church hot water heating system installed . . . . .	[Church History by G.K.Brandwood]
<b>1950</b>		
1950	Mr Sid S. East appointed Headmaster of Great Bowden School. He retired 1971 . . . . .	[1989 Festival Programme]
"	Nether House seriously damaged by fire; one wing demolished . . . . .	[Great Bowden: A walk around the Village]
1951	Parish Church organ restored . . . . .	[Church History by G.K.Brandwood]
1952	Parish Church tower renovated. . . . .	[Church History by G.K.Brandwood]
1954	Last bell No.6 added at Parish Church; memorial to John Thomas March . . . . .	[Church History by G.K.Brandwood]
1955	Tudor House, Manor Road restored & converted from 2 cottages into one . . . . .	[Victoria County History]
1956	The Royal Oak Public House, Upper Green closes . . . . .	[Great Bowden: A walk around the Village]
1957	Great Bowden & District Garden Society first AGM . . . . .	[Jubilee Programme]
1958	Parish Church rewired . . . . .	[Church History by G.K.Brandwood]
"	Former Smithy & Blacksmiths, (The Forge), The Green, extensively restored . . . . .	[Victoria County History]
1961	Housing Development No's29-39A Station Road adjacent to Recreation ground (7 Detached) . . . . .	[Roy Beaumont]
1964	“Bowden to Harborough” by J. C. Davies published. . . . .	
"	Victoria County History for Gartree Hundred published. . . . .	
1967	Market Harborough UDC sell refuse tip, formerly Bowden Brickyard . . . . .	[Harborough District Council]
"	Housing development of Berry Close. (10 detached houses) . . . . .	[Harborough District Council]
"	Fire destroys No. 1 Manor Road (The old Bakehouse), slate covered thatched cottage . . . . .	[Harborough Mail & Keith Gilbert]
1968	Great Bowden Society founded. . . . .	[Harborough Mail 25/7/1968]
"	Housing development of Chater Close. (7 Semi-detached) . . . . .	[Harborough District Council]
1969	“Georgian Harborough” by J. C. Davies published. . . . .	
"	Last of the “Hay” family leave Bowden Hall after 112 years occupancy. . . . .	[Michael C. Brown research]
1970	Great Bowden Hall & 5 acres sold to Geoffrey Page for £9,000 . . . . .	[Michael C. Brown research]
"	November. 50 horse chestnut trees planted in Leicester Lane . . . . .	[MH Advertiser & Midland Mail 19 Nov. 1970]
1971	Tom Noble appointed Headmaster of Great Bowden School. Retired 1982 . . . . .	[1989 Festival Programme]
"	National Decimalisation of Coinage; February. . . . .	
"	Housing development of Bankfield Drive. (4 detached, + 4 semi-detached) . . . . .	[Harborough District Council]
1973	Original housing development of Madeline Close, (9 detached) . . . . .	[Harborough District Council]
1974	Re-Organisation of Local Government & formation of Harborough District Council. . . . .	
"	“Town Affairs” by J. C. Davies published. . . . .	
1976	Granary Close, Main Street completed & first occupied (4 detached) . . . . .	[The Author !]
"	Conversion of two railway cottages. (formerly 3), into one, Main Street. . . . .	[residence of Mr H. F. Austin]
1977	First Great Bowden Village Festival. . . . .	
1980	“Victorian Harborough” by J. C. Davies & M. C. Brown published. . . . .	
"	Housing development of Gunnsbrook Close (23 Bungalows) . . . . .	[Harborough District Council]
1981	Second Great Bowden Village Festival. . . . .	
"	Springfield Lodge, Station Road demolished . . . . .	[Harborough Mail 31 Nov. 1989]
"	Gunnsbrook Close officially opened, (23 bungalows) . . . . .	[Harborough Mail 5 Mar. 1981]
1982	Miss Elizabeth Howe appointed Headmistress of Great Bowden School to present day . . . . .	[1989 Festival Programme]
1983	New village school opened in Gunnsbrook Close . . . . .	[1989 Festival Programme]
"	Old school, Dingley Road, purchased by Parish Church as Church Hall . . . . .	[Great Bowden: A walk around the Village]
"	Great Bowden Women's Institute celebrate diamond jubilee . . . . .	[Leicester Advertiser 30 Jun. 1983]
"	Cob wall between Rectory house & Church rebuilt . . . . .	[Great Bowden: A walk around the Village]
1984	“The Book of Market Harborough” by J. C. Davies & M. C. Brown published. . . . .	
1985	Third Great Bowden Village Festival. . . . .	
1985	Great Bowden Society publish “Great Bowden: A Walk Around the Village”. . . . .	
1987	World War II Stone Memorial erected on The Green . . . . .	[Harborough Mail 5 Nov. 1987]
1988	Great Bowden Arts Club founded . . . . .	[Harborough Mail 9 Nov. 1989]

- 1988 Major refurbishment of Village Hall costing approx £4,000. . . . . [Harborough Mail 31 Mar. 1988]  
 1989 Fourth Great Bowden Village Festival.  
 " Great Bowden School 150 year Celebrations . . . . . [School History 1989]  
 " Telephone Box, Main Street declared Grade II listed building. Type K6 design 1935. [Harborough Mail 22 Jun. 1989]  
 1991 Work started February on A6 North Eastern By-pass. . . . . [Harborough Mail 18 Jan. 1991]  
 " Flower Guild 21st birthday November . . . . . [Harborough Mail 6 Jun. 1991]  
 " Mothers Union Centenary celebrations in July . . . . . [Harborough Mail 6 Jun. 1991]  
 " Notice Board outside Post Office erected. (Oak: cost £900) . . . . . [Harborough Mail 6 Jun. 1991]  
 " Housing development, (Housing Association), off Madeline Close; (11 dwellings) . . [Harborough District Council]  
 1992 A6 North Eastern By-Pass opens 26 June . . . . . ["Talking Shop" by Sam Mullins & D. Stockdale]  
 1993 Fifth Great Bowden Village Festival.  
 " Great Bowden Hall sold by Geoffrey Page to Peter Andrews for £150,000. . . . . [Michael C. Brown research]  
 1995 Completion and occupation of "The Pines", Main Street. (Four large detached houses adjacent to railway).  
 " Renovation of 5, Manor Road completed (Residence of Mr E. G. Gregory)  
 " Welcome Club wound up after 30 years . . . . . [Harborough Mail 23 Mar. 1995]  
 " Turmpike Fine Art Gallery & Studio, Leicester Lane, opens . . . . . [Harborough Mail 23rd March 1995]  
 1996 The Parish of Great Bowden founded in April. Elections 2 May . . . . . [Harborough Mail 18 Jan. 1996]  
 " The Bowden Society wound up after almost 30 years . . . . . [Harborough Mail 5 Sep. 1996]  
 " Great Bowden Hall sold by Peter Andrews to property development company; Ashtenne Residential Ltd.  
 " Renovation & Conversion of Great Bowden Hall into 17 apartments commenced in April.  
 " Great Bowden Historical Society formed. First public meeting 22 April 1996.  
 " Village Appraisal Group Steering Committee formed.  
 " Jubilee of Great Bowden & District Garden Society.  
 1997 Fibre-optic cable laying in village for TV, telephone, communications network and other systems for future use.  
 " Community Wood project launched to the public.  
 " Two Lodge Houses built at Great Bowden Hall.  
 1998 Top Yard Farm, Burnmill Road/Main Street sold for re-development.  
 " Great Bowden Village Appraisal published.

*N.B. Care should be exercised with the interpretation of the population figures because they do not always relate specifically to Great Bowden village, but sometimes cover parts of Market Harborough.*

*The compiler of this chronology would be pleased to receive any corrections or additions to this list but would ask that sources are quoted please. Thank you.*

#### References

- The Great Bowden Church of England Primary School History 1839 - 1989; published 1989.  
 A History of the Church of St. Peter and St. Paul by G.K.Brandwood; published 1979.  
 "Great Bowden: A walk around the Village" published by The Great Bowden Society 1985.  
 "Georgian Harborough" by J. C. Davies, published 1969.  
 "Town Affairs" by J. C. Davies, published 1974.  
 "Bowden to Harborough" by J. C. Davies; published 1964.  
 "Victorian Harborough" by J. C. Davies & M. C. Brown, published 1980.  
 "The Book of Market Harborough" by J. C. Davies & M. C. Brown, published 1984.  
 Great Bowden & District Garden Society 1946 - 1996 Golden Jubilee Programme.  
 Victoria County History. Volume V, Gartree Hundred, published 1964.  
 Fifteen Years under Mkt. Harboro', Great & Little Bowden Local Board: Annals of Transactions 1880 - 1895.  
 "The History of Great Bowden" by Rev. E. E. Farquharson, published 1945.  
 "Market Harborough as I Remember it" by Jane Barrows, published 1990.  
 "The Rise and Fall of the Harborough Bus" by Peter J. Blakeman, published 1982.  
 "The Leicester Line: A History of the Old Union & Grand Union Canals" by Philip A. Stevens, published 1972  
 "The Making of the Leicestershire Canals 1766 - 1814" by A. Temple Patterson.  
 "The Oxford Companion to Local & Family History" by Prof. David Hey, published 1996.  
 "A Historical Survey of Selected LMS Stations" by Dr. R. Preston Hendry & R. Powell Hendry, published 1982.  
 "Around Market Harborough in Old Photographs" by Steph Mastoris, published 1989.  
 Harborough Historian No: 14 "The Great Bowden Show" by Prof. H. Arthur Jones, published 1997.  
 "Talking Shop" by Sam Mullins & David Stockdale, published 1994.  
 "History of The Fernie Hunt 1856 - 1987" by George Thompson, published 1988.